



# Internet Restriction Tool

## Manage Your Users Internet Access

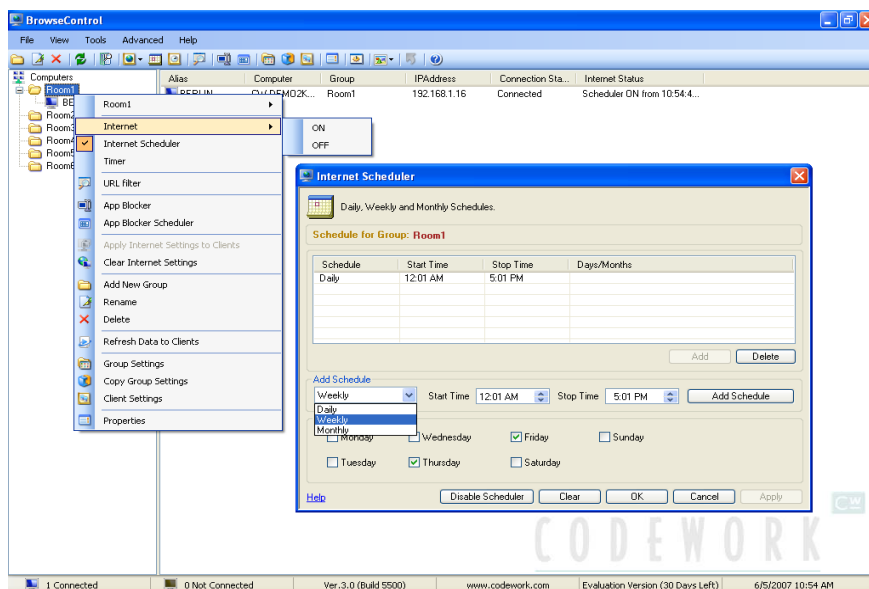
BrowseControl is an **easy-to-use** Internet management tool for controlling the Internet access of your employees or students.

BrowseControl will deny total access to the Internet, allow access to only specific sites (**Allowed List**) or deny access to unauthorized sites (**Blocked List**).

Users can also be restricted access to **Email, FTP sites, Instant Messaging program and more**. Through the **App Blocker** feature, users can also be restricted from running prohibited applications such as chat programs, games and unproductive software.

### BrowseControl Features

- ❖ **Deny** access to any websites on the Internet
- ❖ **Allowed List** – allow access to specific websites
- ❖ **Blocked List** – deny access to specific websites
- ❖ **App Blocker** – restrict use of specific Windows applications such as MSN, solitaire and many more.
- ❖ **Multiple Consoles** – Manage your users from different locations
- ❖ Manage policies by Windows users or by computer.
- ❖ Integration with Active Directory.
- ❖ **Schedule** times during the day when Internet is enabled
- ❖ Block **floppy drive, CD drives and USB drive**
- ❖ Block **keyboard input and mouse input and blank screen**
- ❖ **Shut down** or **reboot** computers remotely



BrowseControl Console

For more information, visit [www.BrowseControl.com](http://www.BrowseControl.com)



## What you can do with BrowseControl

### Disable or Filter Internet Access

- ✓ Totally block Internet access to individual clients or to a group.
- ✓ Allow users access to authorized sites only through the **Allowed List**.
- ✓ Allow users access to the Internet but block access to sites in the **Blocked List**.

**User or PC based Management** Permissions for Internet access and other functionalities can be assigned by User or by PC.

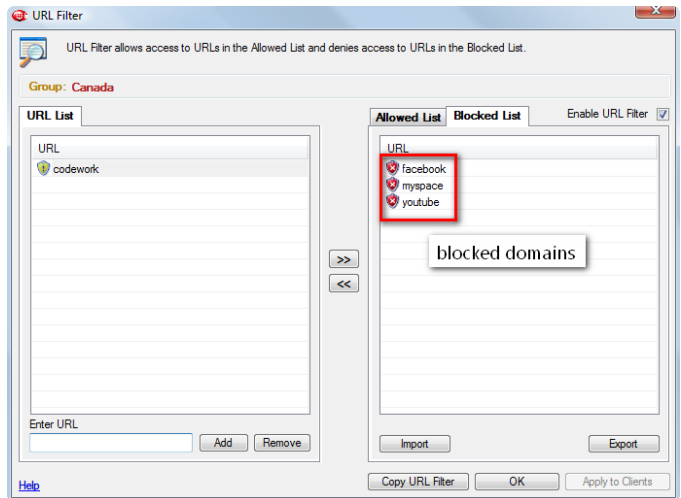
**Active Directory Integration** In User mode, individual users can be imported directly from Active Directory.

**Remote Installation of Clients** BrowseControl Clients can be pushed out remotely from the Console, thereby eliminating the need to visit individual client PCs.

**Scheduler:** Schedules can be created to allow Internet access at specific times only. For example, allow access to the Internet at lunch time only.

**Application Blocking:** Application Blocking will prevent a user from activating specific applications that the administrator has specified in the App Blocker utility.

**Block Users from Downloading specific files:** Block the downloading of unauthorized files such as video files etc..



Deny access to unproductive websites

**Power Management:** Remotely shut down or reboot client systems.

**Block CD/Floppy Drives:** Block CD/Floppy Drives remotely to prevent unauthorized access from external devices.

**Lock Screen, Mouse and Keyboard:** Get the attention of your class or employees by locking their screen, keyboard and mouse

**Admin Users:** Prevents admin users from stopping the BrowseControl client service.

## Supported Operating Systems

### **BrowseControl Server/Console:**

*Windows 2000/2003, XP and Vista*

### **BrowseControl Client:**

*Windows 2000/2003, XP and Vista*

Contact us at [info@codework.com](mailto:info@codework.com) or the following locations:

### **UK/Europe**

#### **Codework Limited**

Lansdowne House,  
85 Buxton Road,  
Stockport, SK2 6LR

**Tel:** +44-(0)161-474-0444

**Fax:** +44-(0)161-474-0787

### **USA**

#### **Codework Inc**

1623, Military Rd #556,  
Niagara Falls, NY  
14304-1745, USA

**Tel:** 905-278-8278

**Fax:** 905-278-0645

### **Canada**

#### **Codework Inc**

629 Sequin Cres.  
ON L5H 1W4

**Tel:** 905-278-8278

**Fax:** 905-278-064

### **Asia**

#### **Codework Inc**

Infopark, Thapasya, Kakkanad  
Kochi – 682030

India

**Tel:** +91 484 2415055

+91 484 4055678

**Fax:** +91 484 4061003

For more information, visit [www.BrowseControl.com](http://www.BrowseControl.com)

